



What are Arcadia's Natural Assets?

COMMUNITY WORKSHOP

Sunday 18 November 10am - 12noon

Conference Room, Arcadia Village Hotel - ALL WELCOME!



You're invited to join this Community Workshop to discuss:

- Where are the natural habitat areas on public land in Arcadia, and what's so special about them?
- How can we promote these natural values to locals and visitors, e.g. a brochure, a video, a plant trail, an event, a website or ...?

Geoffrey Bay Coastcare has received a grant from the National Landcare Program of \$2,350 to design, produce and launch a promotion, but first **we want your ideas and advice.**

Arcadia's Natural Values Community Workshop

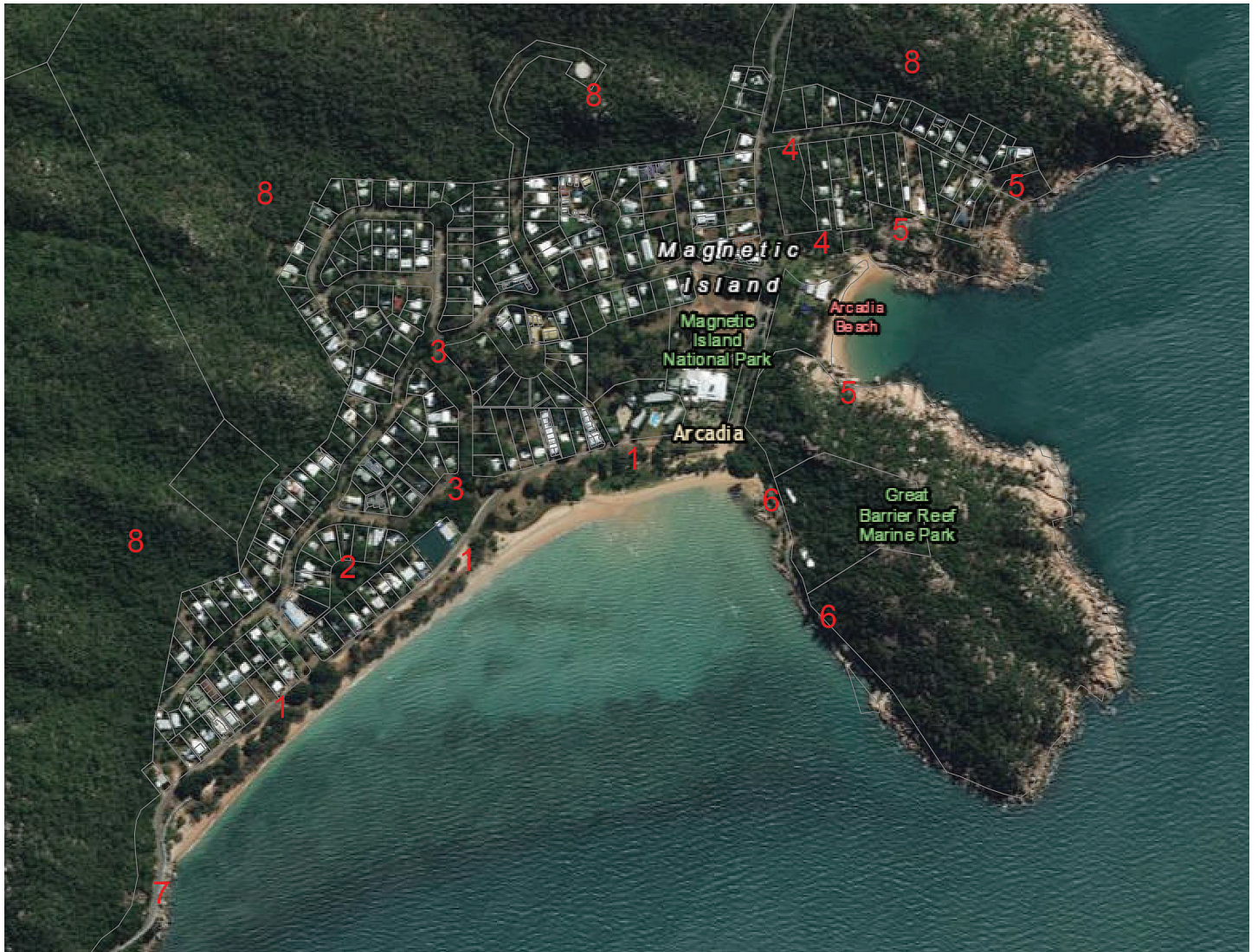
When: Sunday 18th November (9.45am for 10am start, finishing at 12noon)

Where: Arcadia Village Hotel Large Conference Room (Between the Hotel and the Motel)

Please RSVP by Thursday 15th November to meredyth_woodward@hotmail.com or 0408 738 988

This project is a Geoffrey Bay Coastcare initiative, supported by the National Landcare Program.

Arcadia Natural Areas on Public Land - Overview



1. Geoffrey Bay foreshore.
2. Geoffrey Bay scrub.
3. Petersen Creek.
4. Alma Creek.
5. Alma Bay headlands.
6. Jetty Road.
7. Gabul Way.
8. Hinterland.

Some of the topics include:



Wildlife feeding and nesting sites.



Native trees and bushland.



Creeks and reserves.